

2024 EDITION
CAMPERVANS



PILOTE

EDITORIAL

Life is a leap into the unknown.

Every minute, every hour, every day is a fresh surprise for those who wish to seize it. In 1962, a young man created a caravan in his father's woodworking shop. This is where the story began. A trip to the United States in the late 1970's inspired the founder of Pilote to create his first motorhome and, at the same time, a whole new way of experiencing holidays. Greater freedom, greater independence and an unprecedented sense of adventure.

Since that first motorhome, we have travelled many roads together. Our ever more robust, stylish models have continued evolving to offer increasingly functional, elegant, comfortable living spaces. And here we are, 60 years later, back with a Ford chassis. This choice lies close to our hearts as our adventure started with Ford by our side.

The desire to offer you unique experiences has always been our guiding principle. More than the road we travel together, what matters is where that road takes us... Our desire for discovery and our dreams of changing scenery continue to take us further from the well-worn tracks.

You are entirely at liberty to decide where you want to go and what you would like to experience.

We are ready for new adventures. And you?

**ALWAYS GAME,
ALWAYS PILOTE.**



ALWAYS GAME

- 04 Years of know-how
- 06 Dolce vita on the Costa Brava
|THE V54OG
- 08 Idyllic Corsica as a pair
|The V633M PREMIUM
- 10 All the benefits
|Strengths
- 12 Step by step
|Configuration
- 20 Travel around France
|THE V60OG X EDITION
- 24

 NEW

 The peace of
the Austrian Alps
|THE A603G

ALWAYS PILOTE

UPGRADE YOUR
JOURNEY WITH

X EDITION

Unlike campervans that you can configure as you wish, the X Edition models already come fully-upgraded and are ready and waiting for you to begin your journey. X Edition models come with the highest level of equipment as standard for a comfortable and care-free journey. No need to hesitate between the many options, simply hop in and drive away!

SEE PAGE 20

CAMPERVANS THAT TAKE YOU EVERYWHERE

Here at Pilote, we have been designing and manufacturing our motorhomes and campervans for over 60 years, all the while imagining ourselves heading off on journeys with you aboard your Pilote.

That is why the 800 people working in our teams cultivate the high standards, focus on quality, and respect for customers passed from generation to generation. Innovation and experience, industrial processes and traditional craftsmanship, creativity and reliability: you'll find all this and more in your Pilote motorhome. Hit the road with peace of mind, travel further and enjoy freedom: you've got a good partner.



YEARS OF KNOW-HOW

1965

The workshop became too small. The first factory was built nearby. The premises were expanded several times until 1975.

1981

The company invented the low-profile motorhome concept. With the business growing, Pilote boosted its production equipment.

1992

Pilote made motorhomes affordable by launching the First by Pilote range.

2004

New 10,000 m² Pilote factory opened in Membrolle-sur-Longuenée, near Angers.

2015

Return of the iconic Galaxy and Pacific ranges. Pilote developed a wide range of products.

2023

To celebrate its 60th anniversary and further highlight its dreams of limitless travels and adventures, Pilote unveiled Atlas, its new range on a Ford chassis.

1962

The first caravan was made in La Limouzinière by André Padiou, in his father's carpentry workshop. That was when he founded his company.

1976–1978

A trip to the USA inspired the company's first motorhome: the over-cab R430. It was to be called 'Rally' but at the last moment the name 'Pilote' was chosen. The company was a pioneer. During this period, it recorded its first sales outside France.

1985

Pilote released its first A-Class model, the R800DA.

1999

Paris-Dakar: a motorhome driven by Laurent Bourgnon took part in the race for the first time. This event inspired the brand's new slogan: 'Make the World Your Home'.

2011

Pilote entered the campervan market in order to make vehicles to suit all motorhome enthusiasts.

2020

Pilote relaunched its motorhomes with no permanent bed: impressively compact models offering exceptional living space. Pilote became the leader in the French market.

V540G

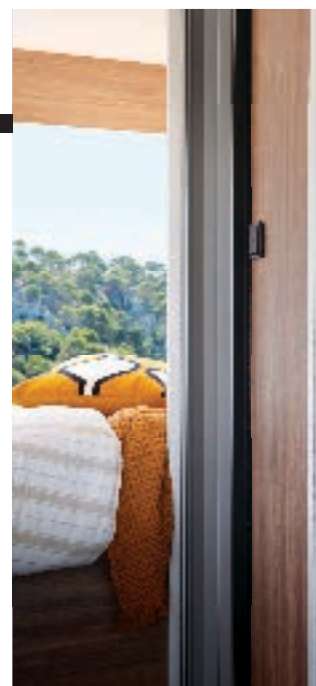
ALWAYS GAME

FOR THE DOLCE VITA* ON THE COSTA BRAVA

*The good life

DISCOVER THE UNSPOILT COSTA BRAVA IN YOUR V540G

Far from the jam-packed beaches and restaurants, you venture along the Costa Brava aboard your V540G wherever the road leads you. Open to the charms of its hidden spots, you are seeking peaceful pleasure. After nine hours of driving, you have finally arrived in this region which promises a captivating holiday.





UNEXPECTED JOY

As you travel along a trail with unobstructed views of the Mediterranean, a secluded, deserted inlet suddenly appears before your eyes. Your swimsuit is always within reach, so you throw off your clothes and dive into the cool, crystal-clear waters... Magical!



SUNNY LANDS

The very next morning, having just eaten breakfast, you immediately head off to explore Llafranc, a picturesque village that is worth the detour. You fall in love with its elegant white streets and peaceful coastal trails. In the coming days, who knows what gems your route might reveal?

- + Standard finish with a gentle, welcoming style
- + Clever storage for organising everything you need
- + Comfortable, functional living space for short and long journeys

V633M

ALWAYS GAME

FOR IDYLIC CORSICA AS A PAIR

**GETAWAY IN YOUR
V633M PREMIUM
BETWEEN CARGÈSE AND
THE CALANQUES DE PIANA**

You love cliffs and little villages perched on hillsides, and have decided to explore around Cargèse, parking only a few steps from a deserted beach with clear waters to savour the peace and quiet of this coastal spot.





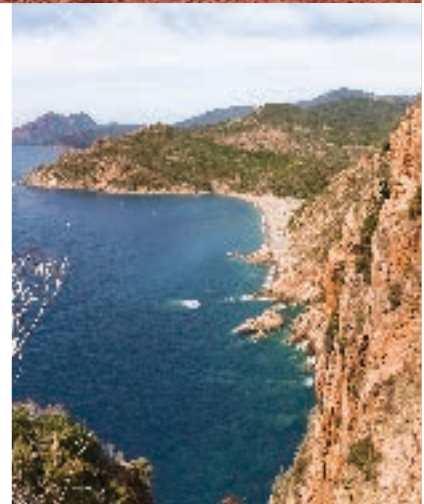
A WELL-DESERVED BREAK

The potholes sprinkled along the road jarred your back and you decide to head back inside earlier than planned. With its generous ceiling height, the lounge can instantly transform into a cosy and welcoming space. But you need to head to bed soon. Tomorrow, the Island of Beauty has more to reveal to curious travellers.



TREASURE IN THE HOLD

You wake up with unobstructed views of the sea from your large bed. It wasn't the sound of the waves that woke you from your slumber but the irresistible desire to discover one of the less well-kept secrets of Corsica: the Calanques de Piana. It is time to get your motorbike out of the huge storage hold, hop on and head south. You'll ride along the coast, stopping whenever you wish to enjoy the views.



- + Premium finish with a contemporary interior style
- + Premium also includes extra storage, car-quality upholstery and other features delivering greater comfort.
- + The V633M features an electric drop-down bed with 2 bed heights for a modular, expandable, large storage hold.

ALWAYS GAME

FOR ALL THE BENEFITS

COMFORT |



LOUNGE

- Seats: 4 people.
- High density foam bench seat for good support and greater durability.
- Open cab for genuine ease of movement without compromising on storage (option).



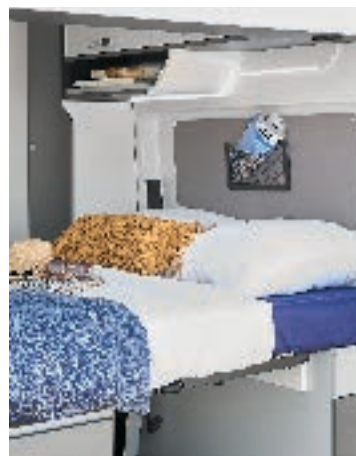
3-IN-1 BATHROOM

- Clever layout with modular units for greater ease of use.
- Inbuilt mirrors and storage.
- Optimal light and air flow system with skylight.



KITCHEN

- Numerous drawers to divide up storage.
- Inbuilt waste bin with lid.
- Combined sink and hob with piezo ignition. Very easy to clean.
- Foldaway worktop extension.



BEDROOM

- Mattress made of high density foam for great sleeping comfort.
- Headboard alcoves for glasses, mobile phones and other small items.
- LED lights and USB ports.

STORAGE CAPACITY



LIVING AREAS

- Plenty of easily accessible storage in every living space.
- All Pilote campervans are designed to be comfortable to drive and stay in while travelling.



STORAGE HOLD

- Large storage area with access from the interior, able to hold bulky items.
- Easily accessible gas bottle compartment.
- Fresh water tank compartment making it easy to clean.

TECHNOLOGY AND QUALITY DESIGN



INSULATION - GRADE 3 CERTIFICATION

- 20 mm polyester fibreboard covered with aluminium foil.
- Sandwich floor with 2 layers of wood and a sheet of 20 mm XPS extruded polystyrene.
- Double-glazed Seitz windows in aluminium frames.
- High performance heating system, validated by cold room testing at Truma®. This means our campervans hold EN 1646-1 certification.



FIAT CHASSIS

- All our chassis are 3.5 tonnes, providing you with a big payload so you can carry everything you need for an enjoyable journey.
- 16" rims.
- Passenger airbag.
- Cruise control and speed limiter.
- ESP and Traction+.



XPERIENCE 2.0 TABLET

- Pilote Group has developed a touchscreen control tablet for all its vehicles, enabling you to manage your consumption:
- Easily managing vehicle systems for greater peace of mind.
 - General lighting management.
 - Tracking battery charge levels.
 - Tracking fresh and waste water levels and remaining supplies.

STEP BY STEP ALWAYS PILOTE

YOU ARE UNIQUE, SO IS YOUR CAMPERVAN

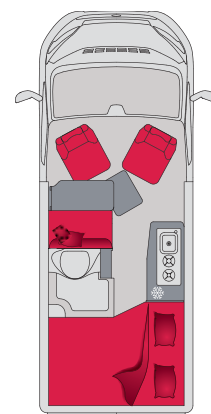
Customise the interior and exterior of your campervan by choosing fittings to perfectly meet your needs and travel desires.

CONFIGURE

- 1 YOUR VEHICLE
- 2 YOUR INTERIOR AMBIENCE
- 3 YOUR EXTERIOR FINISH
- 4 YOUR TECHNICAL SPECIFICATIONS
- 5 YOUR ADDITIONAL EQUIPMENT

1. YOUR VEHICLE

2. YOUR INTERIOR AMBIENCE

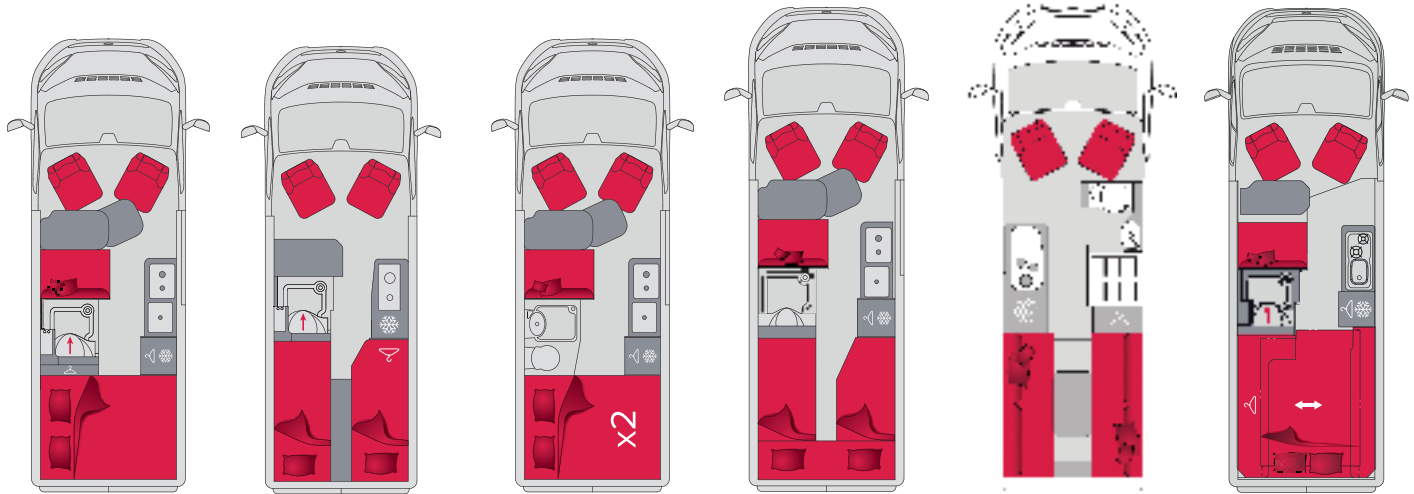


V540G

Available in X EDITION (page 23)	X
Length	5.41 m
Height	2.67 m
Width	2.05 m
Registered (driving) seats	4
Eating seats	4
Sleeping berths	2
Bed measurements	135/115 x 194 cm
Fresh water	110 l
Waste water	80 l
Chassis	3.5 t
Heating	Truma® Combi 4



The compact, manoeuvrable **V540G** has all the fittings that a recreational vehicle needs.



V600G	V600J	V600S	V630J	V630LG	V633M
X	-	-	X		X
5.99 m	5.99 m	5.99 m	6.36 m	6.36 m	6.36 m
2.67 m	2.67 m	2.67 m	2.67 m	2.67 m	2.79 m
2.05 m	2.05 m	2.05 m	2.05 m	2.05 m	2.05 m
4	2	4	4	2	4
4	2	4	4	4	4
2	2	4	2	2	2
147 x 194 cm	77 x 198 cm / 77 x 198 cm	135 x 182 cm / 118 x 178 cm	187 x 76 cm / 187 x 65 cm	187 x 190 cm	148 x 199 cm / 187 cm
110 l	110 l	110 l	110 l	110 l	110 l
80 l	80 l	80 l	80 l	80 l	80 l
3.5 t	3.5 t	3.5 t	3.5 t	3.5 t	3.5 t
Truma® Combi 4	Truma® Combi 4	Truma® Combi 4	Truma® Combi 4	Truma® Combi 4	Truma® Combi 4

The **V600G** sets the benchmark for van conversions.

The **V600J**'s amazing layout is truly ideal for those who prefer to travel as a pair.

The **V600S**, with its bunk beds, is the epitome of family-friendly campervans.

The **V630J** features twin beds that will be popular with taller travellers.

The **V630LG**, exclusively designed for Great Britain, with a large rear lounge.

The **V633M**, with its electric garage bed, gives you an XXL storage hold.

INTERIOR AMBIENCE

STANDARD



ASPEN

PREMIUM



GRAPHITE

STANDARD UPHOLSTERIES

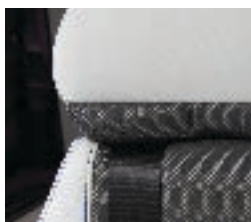


JURA AS STANDARD
(plain fabric)



PLUME OPTION
(imitation leather)

PREMIUM UPHOLSTERIES



GREY
(plain imitation leather)



BLACK
(plain imitation leather)

PREMIUM BENEFITS

- Large lounge with open cab.
- Car-quality comfortable upholstery in fabric and imitation leather (grey or black).
- Laminate graphite units.
- Mirror on bathroom sliding door.
- 70 cm-wide entry step, covering almost the entire sliding door width.
- Fabric-covered ceiling providing greater acoustic comfort, with LED backlighting.
- Full-width overhead cupboard in the bedroom.
- Alcoves under the bedroom's overhead cupboard, providing extra storage.

EXTERIOR FINISH

BODYWORK

NON-METALLIC



WHITE AS STANDARD



CAMPROVO GREY
OPTION



LANZAROTE GREY
OPTION

METALLIC OPTION



BLACK



ARTENSE GREY



IRON GREY



ALUMINIUM GREY

POWER

STANDARD

140 hp
+ EcoPack

OPTIONAL

180 hp
+ EcoPack

THE FIAT EURO 6D

Fiat Ducatos comply with the new European standard (WLTP) and meet regulations.

TRANSMISSION

STANDARD

MANUAL

OPTIONAL

AUTOMATIC

140 hp and 180 hp engine

VEHICLE WEIGHT

STANDARD

3.5 TONNES

All our vehicles are designed with a 3.5-tonne chassis. This configuration gives you even more payload.

OPTIONAL

3.5 TONNES HEAVY

The 3.5-tonne Heavy chassis can pull a 3,000 kg trailer with brakes, giving you 500 kg extra.

DRIVING COMFORT

LUXURY INTERIOR PACK 1 (OPTION)

Steering wheel controls, leather finish steering wheel and gear knob.

Dashboard air vent with aluminium finish.

LUXURY INTERIOR PACK 2 (OPTION)

Luxury Interior Pack 1, 7" digital dashboard, induction charger, 230 V outlet while driving, keyless, engine battery isolator.

RIMS

STANDARD

16" STEEL RIMS

OPTIONAL

16" ALUMINIUM RIMS

POWER/SOLAR PANELS

STANDARD

1 AGM LEISURE BATTERY

ENERGY PACK (OPTION)

**120 W SOLAR PANEL
+ SECOND AGM AUXILIARY BATTERY**

LITHIUM PACK (OPTION)

**120 W SOLAR PANEL
+ 2 LITHIUM BATTERIES + 40 A BOOSTER**

HEATING

STANDARD

TRUMA® 4

OPTIONAL

TRUMA® 6 EH

TRUMA® D4

MULTIMEDIA

SAT PACK (OPTION)



- 22" LED Full HD TV with inbuilt decoder.
- TV bracket (includes TNT memory card for France).
- 60 cm-diameter auto satellite dish.

CAR RADIO PACKS (OPTION)

7" MEDIA PACK

- Reversing camera
- 6.7" car radio with DAB and AppleCar/Android Auto

9" MEDIA PACK

- Reversing camera.
- 9" car radio with GPS, DAB and AppleCar/Android Auto.

10" GPS MEDIA PACK

- Luxury Interior Pack 2.
- 10" FIAT car radio with GPS, DAB and AppleCar/Android Auto.
- FIAT reversing camera.
- Automatic cab air conditioning.

REFRIGERATORS



85-LITRE VITRIFRIGO COMPRESSION REFRIGERATOR

- Large volume and small footprint.
- Built-in freezer.
- Airlock closure system.
- Positive door closure.
- 'Vent position' system to keep the door ajar and prevent any unpleasant odours during wintering.



90-LITRE THETFORD T109 REFRIGERATOR (COMPRESSION)

- Specially designed by Thetford for campervans.
- Adapts to the lines of the bodywork.
- Excellent cooling action thanks to the 12 V compressor.
- Runs extremely quietly.
- 6.5-litre freezer compartment, 2 vegetable crispers, 2 door shelves and 3 spill-proof shelves



138-LITRE THETFORD T2138 REFRIGERATOR (COMPRESSION)

- Optimal use of space.
- Large model.
- CI-BUS compatible.
- Automatic temperature control.
- Separate freezer temperature regulation.
- Practical sliding tray.
- Foldaway holding rails.
- 1 vegetable crisper.
- Flush door handle.
- Refrigerator element at the bottom.

INTERIOR COMFORT

SKYROOF (OPTION)



OPEN CAB (OPTION)



EXTERIOR COMFORT

RELAXATION PACK (OPTION)

- Awning.
- Bike rack.

OUTSIDE SHOWER (OPTION)

With mixer tap in the storage hold.

STORAGE

BEDROOM CUPBOARD (OPTION)

Two overhead cupboards can be replaced by one large 2- or 3-door cupboard depending on the model. This option gives you more storage space.

BEDS



LOUNGE BERTH (OPTION)

Ideal for travelling with young children.



POP-UP ROOF (OPTION)

- Large bed (135 x 200 cm).
- Independent support bed base and foam mattress.
- Cotton canvas with UV coating, three large openings and flyscreens.
- Blackout blinds.
- Heating duct at the pop-up roof entrance.
- Reinforced polyester shell with thermal insulation and soft covering.
- Designed with a low profile hood and shell that adhere to the bodywork's contours, providing a high performance seal.
- TV connection wiring outside the vehicle.
- Reading light and USB port.

V600G

ALWAYS GAME

FOR A TRIP AROUND FRANCE

X EDITION



FROM THE NORMANDY COAST TO LORRAINE ABOARD YOUR V600G

Finally, the holidays are here. Three entire weeks to disconnect and wander wherever you wish to go. This year, your holiday starts in Normandy. Perched atop a cliff on the Albâtre coast, you park your campervan in the lush green landscape and walk closer to the edge to admire the Etretat limestone cliffs and inlets.





PEAK WELLNESS

After the first few weeks of salty air, you start your V600G's engine and head to the Auvergne volcano nature reserve along country lanes. After a few hours, you emerge around a corner and a stunning, majestic landscape appears before your eyes. Here, you feel nature embracing you and allowing you to breathe deeper.



FORGET THE PASSING TIME

From refreshing seaside to reinvigorating countryside, you are now filled with positive energy and can finish your trip in a wonderful way. Nancy, that remarkable city brimming with history and traditions, takes you on a journey back in time in which you can lose yourself. What day is it? Tuesday? Friday? It feels so good to forget your schedule.

⊕ A fully-upgraded campervan. Enjoy the options most popular with seasoned campervan owners.

UPGRADED AS STANDARD ALWAYS PILOTE

X EDITION

To bring you fully upgraded vehicles that are comfortable and entirely optimised, Pilote has chosen the options most popular with our passionate travellers. All you need to do is to take advantage of this offer!

LAYOUTS



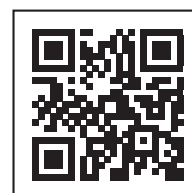
	V540G	V600G	V630J	V633M
Length	5.41 m	5.99 m	6.36 m	6.36 m
Height	2.58 m	2.58 m	2.58 m	2.79 m
Width	2.05 m	2.05 m	2.05 m	2.05 m
Registered (driving) seats	4	4	4	4
Eating seats	4	4	4	4
Sleeping berths	2	2	2	2
Bed measurements	135/115 x 194 cm	135 x 194 cm	76 x 187 cm/65 x 187 cm	148 x 199/187 cm
Fresh water	110 l	110 l	110 l	110 l
Waste water	80 l	80 l	80 l	80 l
Chassis	3.5 t	3.5 t	3.5 t	3.5 t
Heating	Truma® Combi 4	Truma® Combi 4	Truma® Combi 4	Truma® Combi 4

X EDITION OPTIONS AVAILABLE

- 2.2-litre 140 hp Multijet 3 EURO 6D.4 EcoPack Fiat with AT9 automatic transmission
- Rain and light sensors
- Safety pack: Lane Departure Warning System (LDWS), Traffic Sign Recognition (TSR), High Beam Recognition (HBR), rain and light sensor, and Full Brake Control (FBC)
- Blind spot detection
- Extra berth
- Oven in lower kitchen unit
- 6,000 W TRUMA® Combi 6EH hot water/heating

WANT TO KNOW MORE?

Scan this QR code to see all the standard fittings included with X EDITION



X EDITION

EQUIPMENT INCLUDED

GENERAL SPECIFICATIONS
CHASSIS - ENGINE
2.2-litre 140 hp Multijet 3 EURO 6D.4 EcoPack Fiat
3,500 kg light chassis
Driver and passenger air bags
ABS (antilock braking system)
2 electric, auto-defrost wing mirrors – wide angle and blind spot
Spare wheel
16" aluminium rims (not compatible with 3,500 kg Heavy)
Cruise control with speed limiter (all engines)
ESP and Traction+
Tyre pressure sensor
Electric hand brake
EXTERIOR
LED exterior lighting with gutter
Black headlight rims
Black grille trim
Glossy black skid plate (bumper insert)
Painted front bumper (in bodywork colour)
LED day running lights
Front fog lights
Pastel bodywork paint: Lanzarote Grey
BODYWORK
Polyester fibre insulation
CAB
Cup-holder in centre of dashboard
Dual USB port (A type + C type)
Manual cab air conditioning
Height-adjustable, swivel cab seats with two armrests
Central locking and electric windows
Leather steering wheel and gear knob, aluminium grey finish on air vent, and steering wheel controls
Cab seat cover
Front and side sliding cab blinds
Open alcove
ENTRANCE
985 x 465 mm sash window with concertina blinds and flyscreen
Foldaway electric step (550 mm wide)
Flyscreen for sliding door
Cab carpet
LOUNGE
LED lighting
USB port
230 V power outlet
Sash window with concertina blinds and flyscreen
700 x 500 mm panoramic sunroof
High density seat foam
Imitation leather upholstery

KITCHEN
LED lighting
Soft-close drawer unit with saucepan drawer
Combination 2-hob camping stove and sink
Compression refrigerator
Waste bin compartment
Spice rack
Classic kitchen
BATHROOM
LED lighting
280 x 280 mm transparent skylight with flyscreen
Toilet with removable cassette on castors (19.3-litre capacity)
Towel rail and storage
Window (280 x 380 mm)
BEDROOM
LED lighting
Comfort foam mattress
USB port
420 x 420 mm skylight with concertina blinds and flyscreen
Bed insert between twin beds
STORAGE AREA
Outside shower: hot/cold water
ACCESSORIES
Awning
MULTIMEDIA
Radio hook-up (dish and cab speaker wiring)
Satellite dish wiring
9" car radio with GPS, DAB and AppleCar/Android Auto + reversing camera
ENERGY - AUTONOMY
4,000 W TRUMA® Combi 4 hot water/heating
18 A battery charger
AGM auxiliary battery
Wiring for solar panel and satellite dish
Compartment for 2 x 13 kg gas bottles
Single pressure regulator – Truma® Crash Sensor – for use while driving
Second AGM battery + 1 ultra flat solar panel
90-litre diesel tank
90-litre insulated waste water tank

A603G

NEW

ALWAYS GAME FOR THE PEACE OF THE AUSTRIAN ALPS

**OFF TO EXPLORE TYROL
IN AN ATLAS FORD**

You've been driving your campervan along the roads for 30 years. This year, you invested in an Atlas Ford so you could travel wherever you want, in comfort. Like this autumn, when you decided to head to the craggy, hilly landscapes of the Austrian Alps.





MOUNTAIN BIKE ADVENTURES

After a good night's sleep, the unspoilt, wild beauty of the mountains calls to you. Aboard your Atlas Ford, you drive towards a hiking trail a local recommended to you the night before, while you dined at her restaurant. At the start of the trail, you park and get your e-mountain bikes out to seek out new summits.



ROMANCE AT ALTITUDE

The highlight of your getaway is the romantic picnic on the empty shores of a mountain lake, gazing at nature's stunning reflection on the surface of the tranquil waters. Daringly, you enter the water for a short swim on this sunny October day.

- + Ford Trail chassis with a limited-slip differential. Ideal for side roads!
- + 170 hp engine
- + Very large storage area which can fit bikes.

YOUR FULLY-UPGRADED CAMPERVAN

To celebrate its 60th anniversary, Pilote is reconnecting with its roots and long-term partner. In the 1980s, Pilote built a solid partnership with Ford and became the leader in Europe with its R360. In 2024, 40 years later, Pilote is introducing the new Atlas range of compact vehicles with a seasoned traveller look on a Ford Transit chassis.

OVERVIEW



	A603G
↔ Length	5.98 m
↔ Width	2.5 m
↑↓ Height	2.89 m
👤 Driving seats	4
🍴 Dining seats	4
🛏 Fixed berths	2
🛏 Optional berths*	1

* Additional lounge bed for 1 adult or 2 children.

STANDARD FITTINGS

CHASSIS – ENGINE

- 2.0-litre 170 hp TDCi BV6 engine
- Trail chassis with limited-slip differential (requires 170 hp BV6 engine)
- 3,500 kg chassis
- 16" matte black alloy rims (235/65 R16C)

EXTERIOR

- Metallic bodywork paint: Azure Blue
- Exclusive 'Ford' design grille
- Silver front bumper protective plate
- Black side protection strip and side skirt
- LED day running lights
- Halogen headlights
- LED exterior lighting with gutter

SAFETY FEATURES

- Driver and passenger air bags
- ABS, ESP, hill holder
- 4-season tyres (with snowflake)
- Puncture repair kit
- Electric heated, folding wing mirrors
- Tyre pressure sensor
- Electric parking brake
- Front and rear parking assistance
- Fog lights
- Cruise control and speed limiter
- Rain/light sensors
- Electric auto-defrost windscreen
- Lane departure warning and lane assist
- Collision alert and emergency braking

BODYWORK

- Aluminised polyester fibre insulation

CAB

- Height-adjustable, swivel cab seats with two armrests
- Imitation leather steering wheel
- Cab seat cover
- Manual cab air conditioning
- Central locking and electric windows
- Car radio controls on steering wheel
- Front and side sliding cab blinds
- Open alcove

ENTRANCE

- 985 x 465 mm sash window with concertina blinds and flyscreen
- Flyscreen for sliding door
- Foldaway electric step (700 mm wide)
- Cab carpet

LOUNGE

- USB port
- Spotlights
- 560 x 465 mm sash window with concertina blinds and flyscreen
- 700 x 500 mm skylight with blinds and flyscreen
- High density seat foam with Obsidian imitation leather/fabric upholstery
- Optional extra berth in lounge

KITCHEN

- 230 V power outlet
- Soft-close drawer unit with saucepan drawer
- Bottle rack
- Combination 2-hob camping stove and sink
- Compression refrigerator with drawer
- Spice rack

BATHROOM

- 280 x 280 mm transparent skylight with flyscreen
- Toilet with removable cassette on castors (19.3-litre capacity)
- Towel rail and storage
- Window (280 x 380 mm)
- Duckboard shower floor

BEDROOM

- Reading light with inbuilt USB port
- Comfort foam mattress
- 400 x 400 mm skylight with concertina blinds and flyscreen
- Right side rear window (818 x 315) with black-out blind
- Fixed, auto-defrost, tinted rear window
- Fabric blackout blinds on rear windows

STORAGE AREA

- LED lighting in the storage area
- 230 V power outlet
- Outside shower: hot/cold water
- Storage area floor protection mat
- Stowage bars

ACCESSORIES

- Awning

MULTIMEDIA

- Radio hook-up (dish and cab speaker wiring)
- 9" Pioneer car radio with GPS compatible with Apple CarPlay/Android Auto
- Reversing camera
- Satellite dish wiring

ENERGY - AUTONOMY

- 18 A battery charger
- 95 Ah AGM auxiliary battery
- Second 95 Ah AGM auxiliary battery
- Ultra flat solar panel
- Wiring for solar panel and satellite dish
- Compartment for 1 x 2.75 kg R907 gas bottle
- Single pressure regulator
- 70-litre diesel tank
- 90-litre insulated waste water tank
- 4,000 W Combi D4 Truma® heating/hot water including altitude kit (requires second AGM auxiliary battery or lithium battery)

OPTION AVAILABLE

- 2 x 105 Ah LiFePo4 batteries + 40 A charger/booster





LEGAL NOTICES:

S.A.S with equity of €20 376 600 - APE 2910 Z - RCS Nantes B872802780 - VAT FR52872802780
Route du Demi-Boeuf, 44310 LA LIMOZINIÈRE - FRANCE - Tel.: +33 (0)2 40 32 16 00 - www.pilote-motorhome.uk

Note: This brochure shows the information known at the time of printing. It does not constitute a binding document under any circumstances. Despite the care taken in preparing this document, printing errors may still occur. We reserve the right to modify fittings and improve products in the current year's models without prior notice. Some vehicles are shown with special or optional features which are listed in the corresponding price lists and available at an additional cost. Style items and decorations used to embellish the visual presentation of this catalogue are not included in the actual vehicle nor in the delivery service. The available payload is the difference between the Maximum Technically Permissible Laden Mass (MTPLM) and the Mass in Running Order (MRO). The latter includes the vehicle, its bodywork, furniture, standard fittings, 90% full fuel tank, full gas cylinder, driving capacity fresh water tank, empty waste water tanks, required fluids and a driver (75 kg). Ensure that the maximum weight permitted is never exceeded (total and per axle). Important: installed optional fittings and accessories are not included in the motorhome's MRO. Consequently, they will systematically reduce the available payload and potentially reduce the number of driving seats. Contact your dealer, who will be happy to provide you with an accurate definition of the models available in each country. Before submitting your order, please contact a dealer for information about the current product and collection status. Information about the vehicle's delivery, appearance, performance, dimensions and mass correspond to the information known at the time of printing. Those details and tolerances comply with European regulations (EU 1230/2012), however they are subject to change up until the time of vehicle purchase or delivery. Prices are valid for the 2024 Collection in Metropolitan France on 1 July 2023. They may change throughout the course of the year. All photos were taken in accordance with local regulations, whether on the road, in private areas or at campsites.